

WELCOME



GLOBAL BUYERS MARKETPLACE NAPA VALLEY

NOVEMBER 7, 2023

WIFI

NETWORK:

Marriott Bonvoy_Conference

PASSWORD:

buycalifornia





LODI WINE
CALIFORNIA

LODI

A RISING STAR IN CALIFORNIA WINE





LODI AMERICAN VITICULTURAL AREA (AVA)

A HISTORY



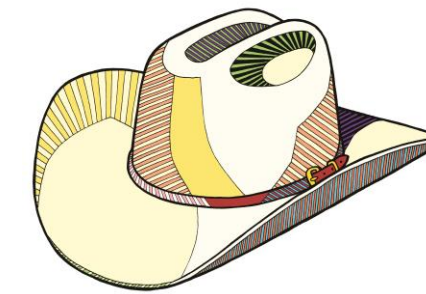
1850s

First vineyard plantings and wineries are established.



1920-33

Prohibition. Lodi flourishes with new acreage. Grapes are shipped to the east coast. Vineyard designate labels appear.



1986

Lodi American Viticultural Area (AVA) is officially established.



2000s

7 Sub-appellations are established (2006). LODI RULES is officially accredited (2005). Lodi Wine Visitor Center opens (2000).

1890s

Farmers transition from watermelon to winegrapes. Local newspaper declares wine production the “coming industry” in 1901.

1960-70s

Consumer tastes shift during “Golden Age of Wine.” Varietal boom in Lodi with premium winegrapes.



1990s

Acreage doubles. Vineyard advances in rootstock selection, clonal selection, irrigation, trellising, others

LODI AMERICAN VITICULTURAL AREA (AVA)

BACKBONE OF THE AMERICAN WINE INDUSTRY

750 Winegrowers devoted to innovation, sustainability, and heritage.

100K Acres planted to premium winegrapes farmed by 750 winegrowers.

100+ Unique winegrape varieties. Signature is old vine, own-rooted Zinfandel.

20% North America's leading producer at 20% of California's total. Leading producer of Cabernet Sauvignon, Merlot, Zinfandel, Chardonnay, Sauvignon Blanc, Pinot Gris, Petite Sirah, others.

30% North America's leading producer of premium Zinfandel at 30% of California's total.

85 Boutique wineries. Most are family-owned and operated.





LODI IS PERFECTLY SITUATED

PROXIMITY TO THE BAY

Located directly east (90 miles) of the largest gap in California's Coast Ranges – the San Francisco Bay.

MEDITERRANEAN CLIMATE

Cool, moist winters and warm, dry summers characterize the Lodi winegrowing region.

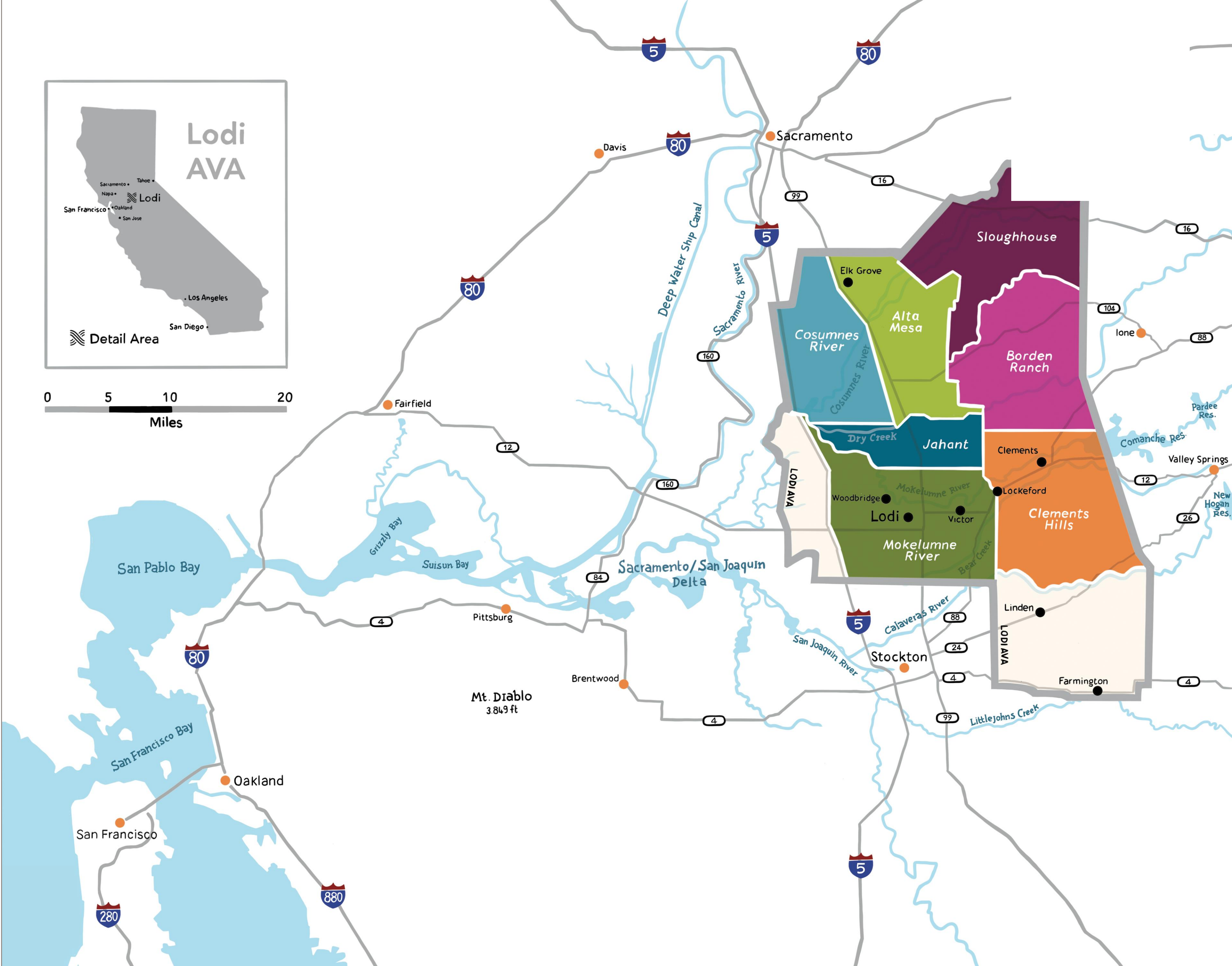
WARM DAYS, COOL NIGHTS

Diurnal temperature swings contribute to fragrant, fruit-focused qualities of Lodi wines.

NATURAL AIR CONDITIONING

Cool winds (or "Delta Breezes") off the Pacific Ocean travel inland, acting as a natural air conditioner which helps maintain acidity in winegrapes.

Cool winds off the Pacific Ocean travel inland over a series of natural waterways, acting as a natural air conditioner for the region.



AVERAGE TEMPERATURE

THE GROWING SEASON

	MAR	APR	MAY	JUN	JUL	AUG	SEPT	OCT
Lodi	65.7 41.8	72.5 44.5	79.4 49.0	86.6 53.2	91.5 55.6	90.0 54.4	86.5 52.2	77.4 46.6
St. Helena (Napa Valley)	65.4 40.3	71.5 42.7	78.1 46.7	85.0 50.4	89.7 52.1	88.9 51.4	85.9 49.1	77.3 45.4
Healdsburg (Sonoma)	66.8 41.6	72.1 43.8	78.3 47.7	85.1 51.3	88.8 52.0	88.2 51.5	85.8 50.5	78.0 47.0
Paso Robles	67.3 38.5	73.0 40.1	79.4 43.8	86.9 47.7	92.6 50.3	92.6 49.8	88.8 47.2	80.3 42.0

This graph shows the average high/low temperature of Lodi in comparison to surrounding wine appellations. *Source is Western Regional Climate Center (WRCC). Period is 1896-2016.*

LODI HAS DIVERSE SOILS

RICH & MINERAL LADEN

Two major rivers originating in the Sierra Nevada mountain range feed the Lodi appellation – the Mokelumne and Cosumnes. These rivers have brought soils rich in granitic-based minerals.

FINE SANDY LOAMS

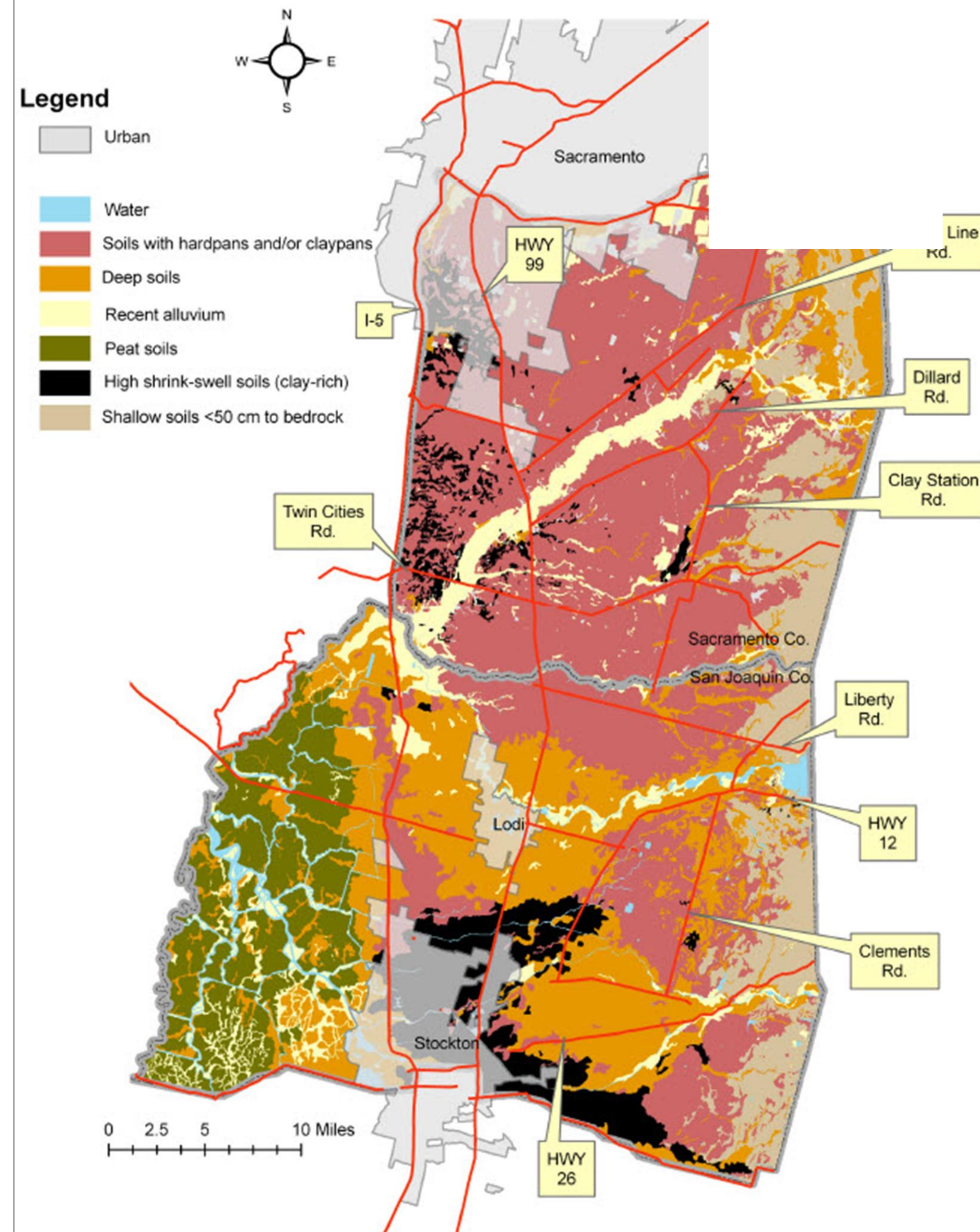
Historically Lodi vineyards were developed in the fine sandy loam soils surrounding the community of Lodi.

DIVERSE RANGE

A range of older, poor soils are found in the rolling hills along the eastern edge of the appellation.

LOW VIGOR

Low fertility soils range from heavier, clay-based soils in the south to well-drained, stony soils in the north.



7 DISTINCT SUB- AVAs

CONTRASTS IN SOILS, TOPOGRAPHIES
& CLIMATE

Jahant

Cosumnes River

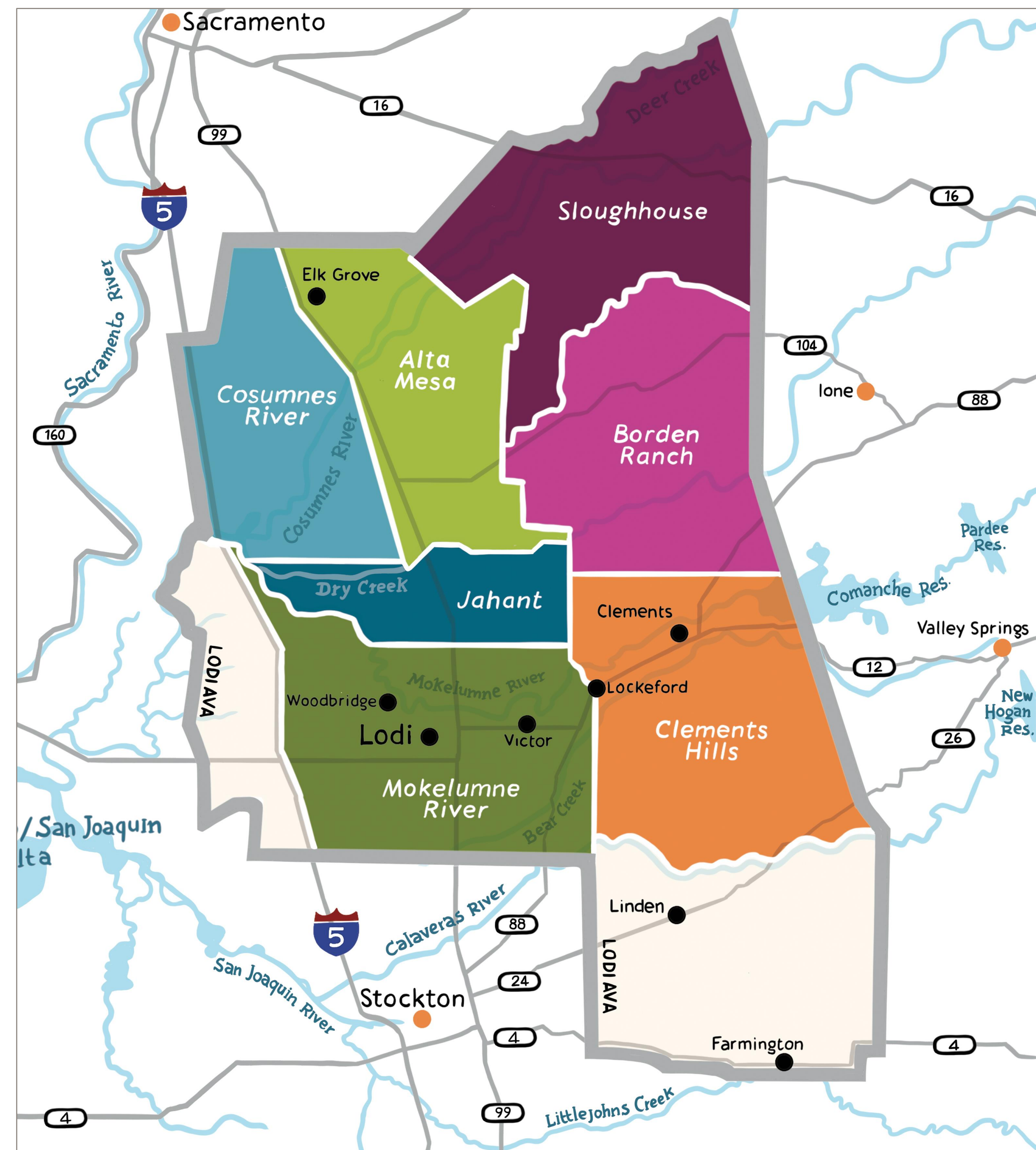
Alta Mesa

Sloughhouse

Borden Ranch

Clements Hills

Mokelumne River



MOKELUMNE RIVER AVA



42,000 ACRES UNDER VINE | 85,700 total acres

TOPOGRAPHY | Fairly flat with elevations from 10 to 85 feet

SOIL | Deep, alluvial, organically rich Tokay sandy loam, no immediate hardpans

CLIMATE | Cooler climate moderated by Delta Breezes

VARIETIES | Over 100 varieties grow here. Primary source of old, own-rooted vines.





Tokay fine sandy
loam soil in Lodi's
Mokelumne River
AVA.

JAHANT AVA



9,000 ACRES UNDER VINE | 28,000 total acres

TOPOGRAPHY | Relatively flat; desiccated river terraces and floodplains with elevations from 10 to 80 feet

SOIL | Shallow, pinkish sandy clay loam, root restrictive layers

CLIMATE | Cooler with cold air drainage and entrapment; influence of Delta fog provides coolest growing season on average

VARIETIES | Extensive plantings of Chardonnay, Viognier, Sauvignon Blanc, and other red varieties



COSUMNES AVA



3,500 ACRES UNDER VINE | 54,700 total acres

TOPOGRAPHY | Slopes and terrace tops with varying aspects; natural woodland environment and elevations from 5 to 48 feet

SOIL | Young, moderately fertile silt, sand, gravel, and clay

CLIMATE | Cooler climate due to near sea-level elevation and proximity to Delta fog

VARIETIES | White varieties like Chardonnay, Pinot Gris, Vermentino, and others



ALTA MESA AVA



5,300 ACRES UNDER VINE | 55,400 total acres

TOPOGRAPHY | Fairly flat tabletop or mesa-like with intermediate river terrace elevations from 31 to 135 feet

SOIL | Dense, reddish, gravelly clay loam, thick hardpan layers

CLIMATE | Influenced by Delta breezes; marginally higher temperatures than the lower lying Cosumnes River AVA

VARIETIES | Cabernet Sauvignon, Merlot, Malbec, Verdelho, Vermentino, Tannat, Touriga, and others



CLEMENTS HILLS AVA



21,700 ACRES UNDER VINE | 85,400 total acres

TOPOGRAPHY | Rolling and rounded hillside and natural woodland environments with elevations from 100 to 450 feet

SOIL | Older, lower vigor soils, loams, and clays; granite and volcanic clasts

CLIMATE | Warmer and wetter than westside AVAs; cooler than other eastside AVAs with wide diurnal swings

VARIETIES | Rhône and Spanish varieties with Cabernet Sauvignon, Chardonnay, Zinfandel, and others

BORDEN RANCH AVA



12,000 ACRES UNDER VINE | 70,000 total acres

TOPOGRAPHY | Natural prairie mound environment; hillsides with multiple slope aspects and exposures with elevations from 73 to 520 feet

SOIL | Volcanic mud, cobble, and stony clay loams

CLIMATE | Warmer and wetter than westside AVAs; higher wind than other eastside AVAs

VARIETIES | Predominance of red wine varieties with Chardonnay, Sauvignon Blanc, and others



SLOUGHHOUSE AVA



8,000 ACRES UNDER VINE | 78,800 total acres

TOPOGRAPHY | Natural woodland environment with river rock slopes and higher elevations from 100 to 590 feet

SOIL | Old, low vigor reddish sand, silt, and volcanic clay loam

CLIMATE | Coolest winters; warmest days and coolest nights during growing season with highest precipitation and little to no fog

VARIETIES | Cabernet Franc, Petit Verdot, Grenache, Mourvèdre, and others





Loose, stony topsoil in
Lodi's Sloughhouse
AVA.



LODI HAS A DIVERSE RANGE OF GRAPE VARIETIES

SPANISH VARIETIES

Albariño, Verdejo, Graciano, Tempranillo, Garnacha, and others.

RHÔNE VARIETIES

Cinsault, Viognier, Syrah, Picpoul Blanc, Tannat, and others.

GERMAN + AUSTRIAN VARIETIES

Kerner, Bacchus, Riesling, Dornfelder, Gewürztraminer, Zweigelt, and others.

PORTUGUESE VARIETIES

Touriga Nacional, Tinta Cão, Souzão, Verdelho, Trincadeira, and others.



OLD VINE ZINFANDEL

WHAT MAKES IT SPECIAL

OLD + OWN-ROOTED

Thousands of acres of own-rooted old vines – mainly Zinfandel – exist in Lodi, primarily in and around the Mokelumne River AVA in sandy soils NOT conducive to Phylloxera. Many date back to the early 1900s.

SELF-REGULATING

Have evolved with the ecosystem or environment to find a natural balance and require minimal intervention.

SITE-EXPRESSIVE

Produce elegant wines with a distinct sense of the vineyard terroir.

LIVING HISTORY

Living, breathing remnants of California's and Lodi's winegrowing history. Oh, the stories they tell.

LODI IS SUSTAINABLE

LODI RULES FOR SUSTAINABLE
WINEGROWING

CREATED BY FARMERS

Launched as a grassroots integrated pest management program in 1992.
Officially accredited in 2005.

HOLISTIC APPROACH

Program seeks to ensure longevity of entire community. Promotes adoption of more than 100 sustainability practices or standards organized into six chapters: business management, human resources management, ecosystem management, soil management, water management, and pest management.

THIRD-PARTY ACCREDITED

Certification is awarded on an annual basis by Protected Harvest – a non-profit organization of leading agriculturalists and scientists.



LODI RULES FOR SUSTAINABLE WINEGROWING

BY THE NUMBERS

100+ sustainable practices in LODI RULES.

64,000+ acres certified in California, in Washington, and in Israel.

>1,300 certified vineyards.

HUNDREDS of LODI RULES farmers.

>\$10 MILLION paid in bonuses to LODI RULES farmers since 2010.

150+ wines bear the LODI RULES seal.





LODI WINE
CALIFORNIA

THANK YOU

LODIWINE.COM



AS ALIVE AS THE PLACE THEY'RE GROWN



