

# WELCOME



**GLOBAL  
BUYERS**  
**MARKETPLACE**  
NAPA VALLEY

# NOVEMBER 6, 2023

# WIFI

**NETWORK:**

Marriott Bonvoy\_Conference

**PASSWORD:**

buycalifornia





# **Innovators of California**

**BY ELAINE CHUKAN BROWN**

**NOVEMBER 6, 2023 – NAPA VALLEY**

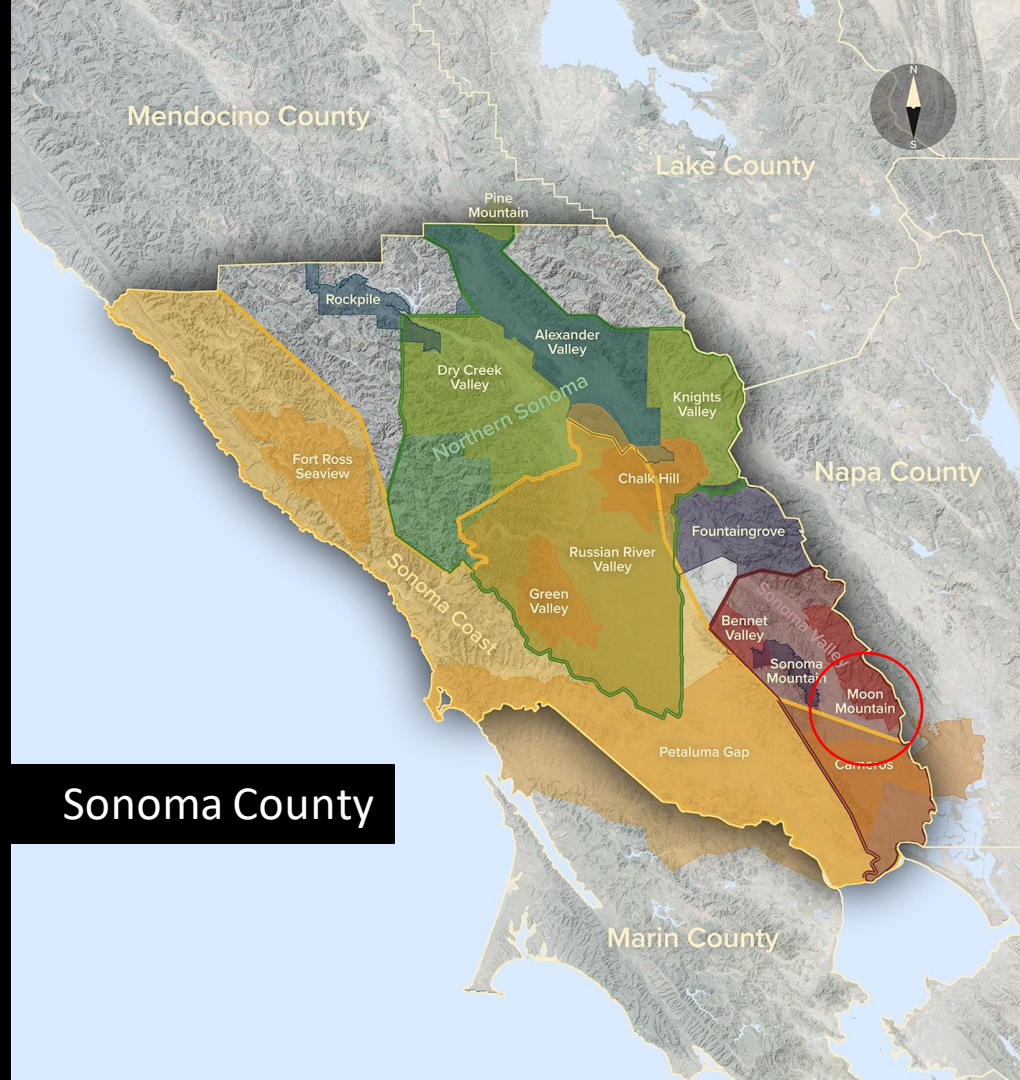




# California







Sonoma County

# Wine One

**Producer:** Hanzell Vineyards

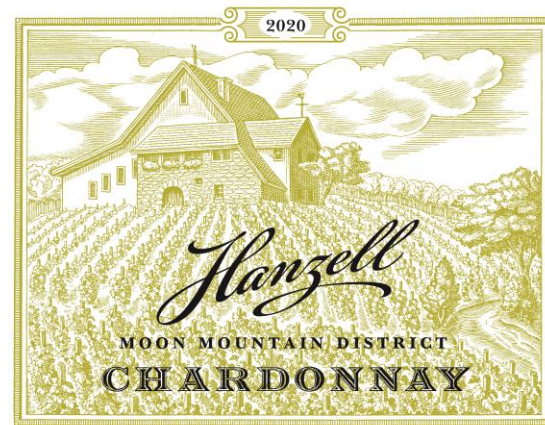
**Vintage:** 2020

**Name:** Heritage Chardonnay

**Variety:** 100% Chardonnay

**Appellation:** Moon Mountain District

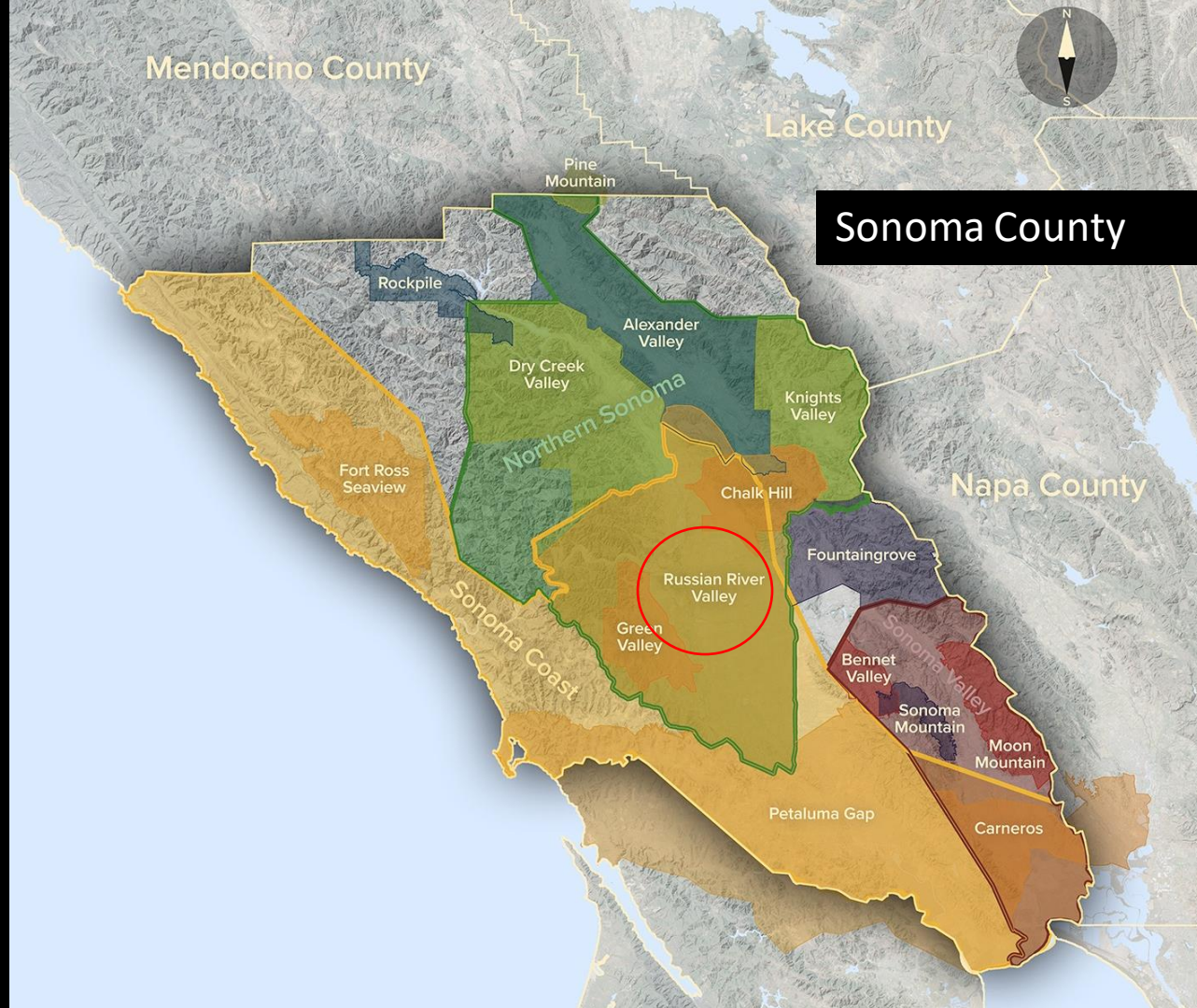
**Alc:** 14.1%



*Grown, Produced and Bottled at the Winery by*  
HANZELL VINEYARDS | SONOMA | CALIFORNIA









# Wine Two

**Producer:** Ramey Wine Cellars

**Vintage:** 2021

**Variety:** 100% Chardonnay

**Appellation:** Russian River Valley

**Alc:** 13.5%





# Wine Three

**Producer:** Kendall-Jackson Wines

**Vintage:** 2022

**Name:** Vintner's Reserve Chardonnay

**Variety:** 100% Chardonnay

**Appellation:** California

**Alc:** 13.5%







Santa Barbara County



# Wine Four

**Producer:** Au Bon Climat

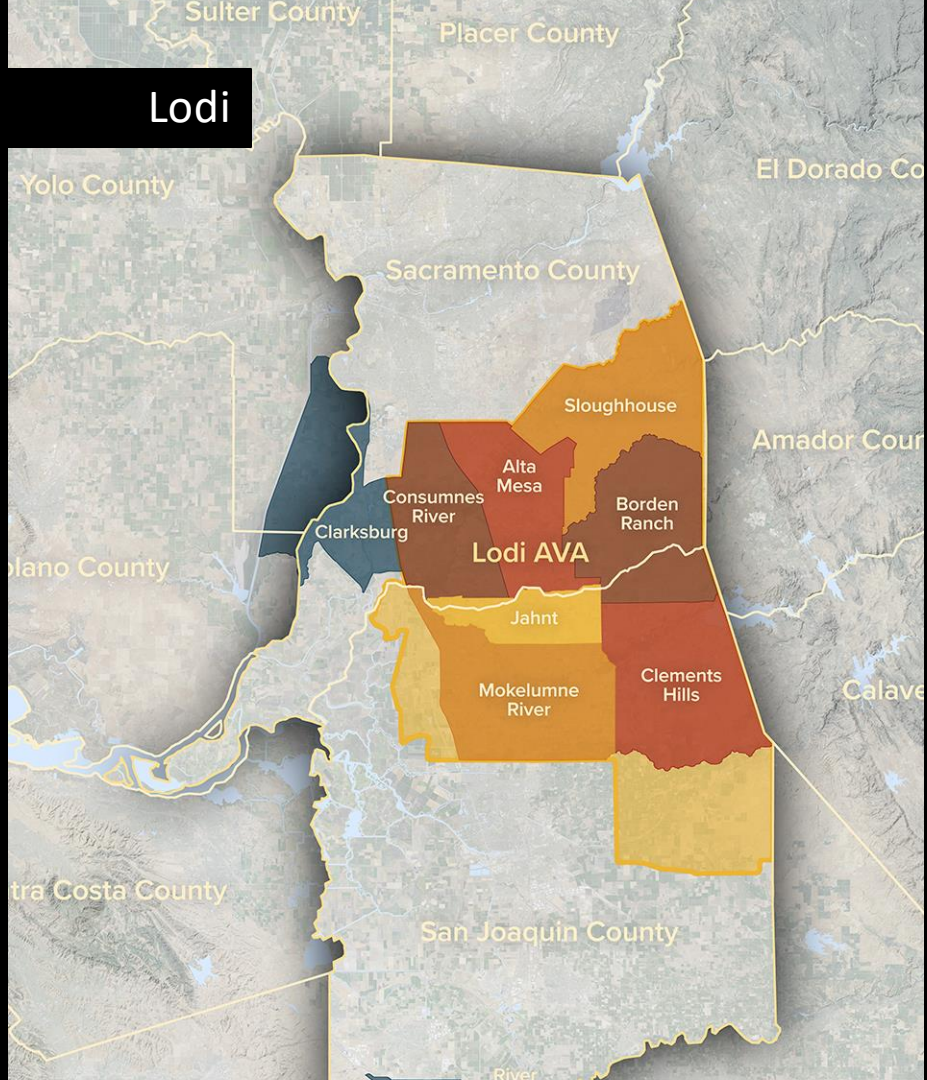
**Vintage:** 2022

**Variety:** 100% Pinot Noir

**Appellation:** Santa Barbara County

**Alc:** 13.5%





# Wine Five

**Producer:** LangeTwins Family Winery & Vineyards

**Vintage:** 2017

**Name:** Centennial Old Vine Zinfandel

**Variety:** 100% Zinfandel

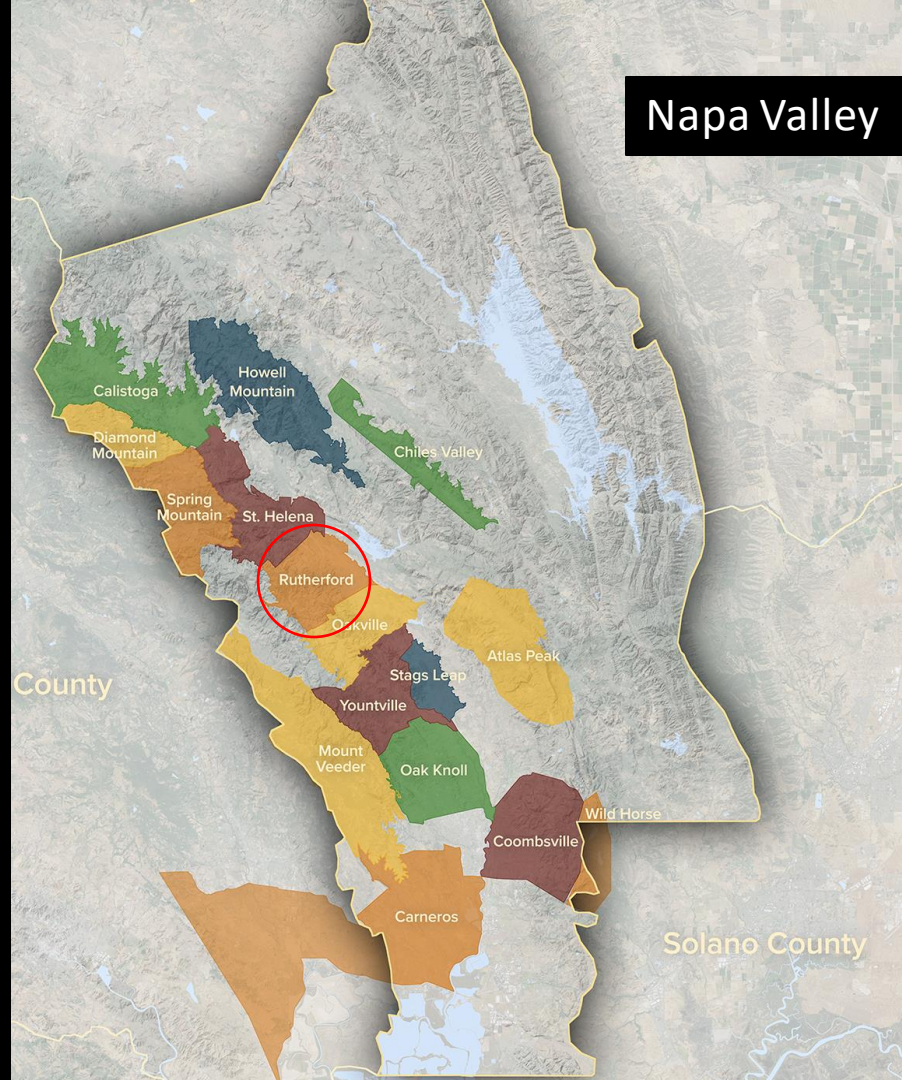
**Appellation:** Lodi

**Alc:** 15%





# Napa Valley





# Wine Six

**Producer:** Quintessa

**Vintage:** 2019

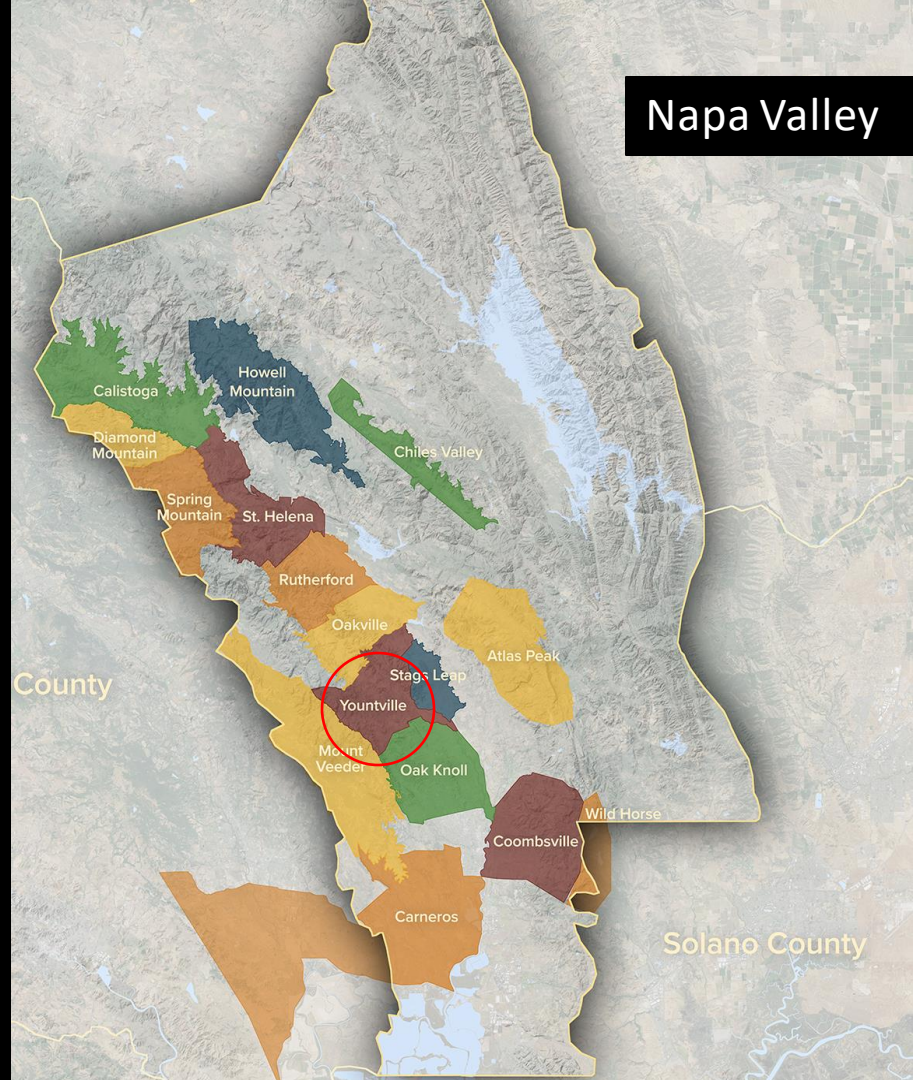
**Varieties:** 91% Cabernet Sauvignon, 4% Cabernet Franc, 2% Merlot, 2% Carménère, 1% Petit Verdot

**Appellation:** Rutherford, Napa Valley

**Alc:** 14.5%



# Napa Valley



# Wine Seven

**Producer:** Grgich Hills Estate

**Vintage:** 2018

**Name:** Old Vine Cabernet Sauvignon

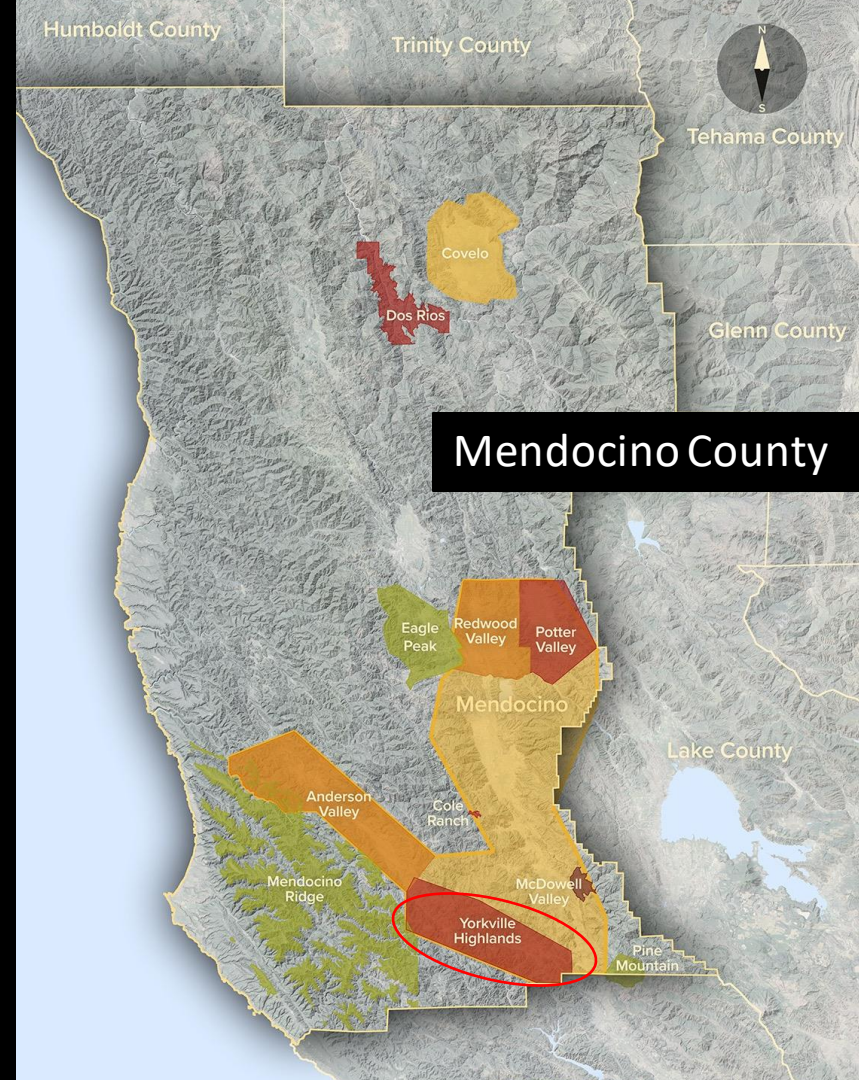
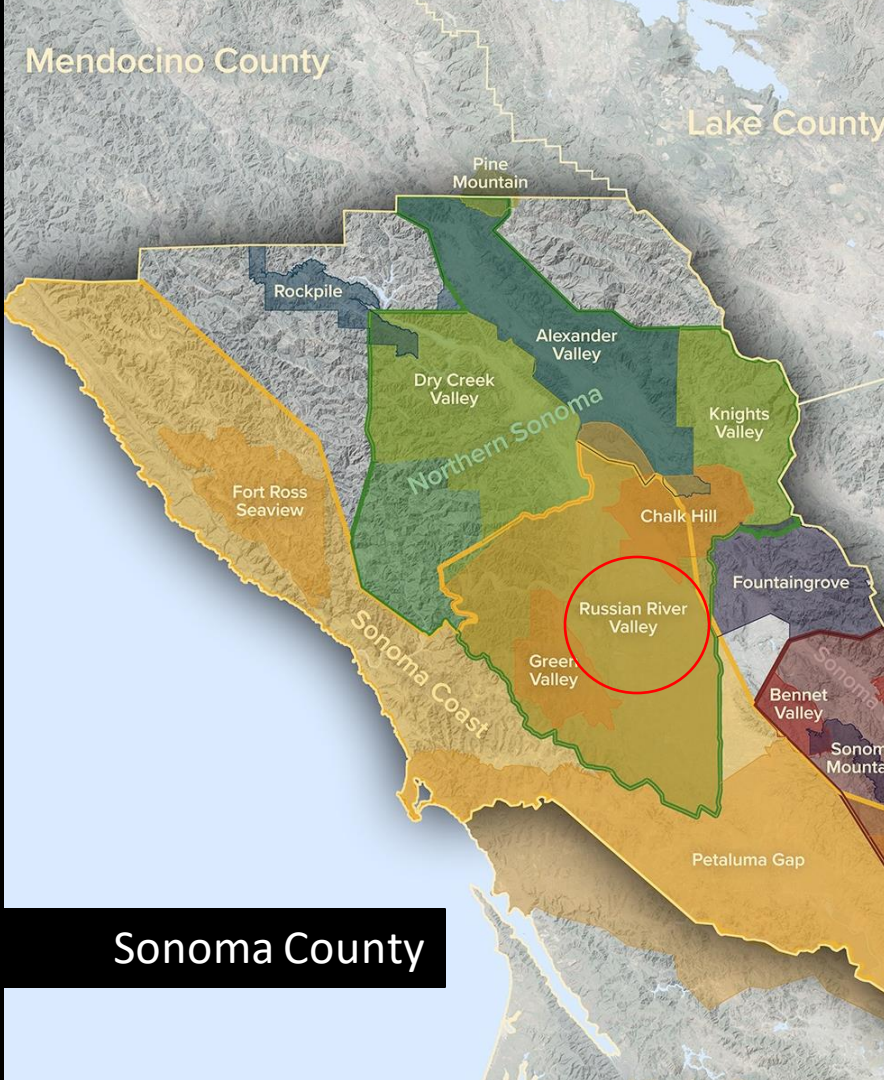
**Varieties:** 90% Cabernet Sauvignon, Petit Verdot,  
Cabernet Franc

**Appellation:** Yountville, Napa Valley

**Alc:** 14.5%









# Wine Eight

**Producer:** Jolie Laide

**Vintage:** 2022

**Variety:** Aligoté

**Appellation:** California

**Alc:** 12.5%





# AS ALIVE AS THE PLACE THEY'RE GROWN



